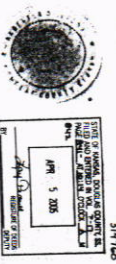
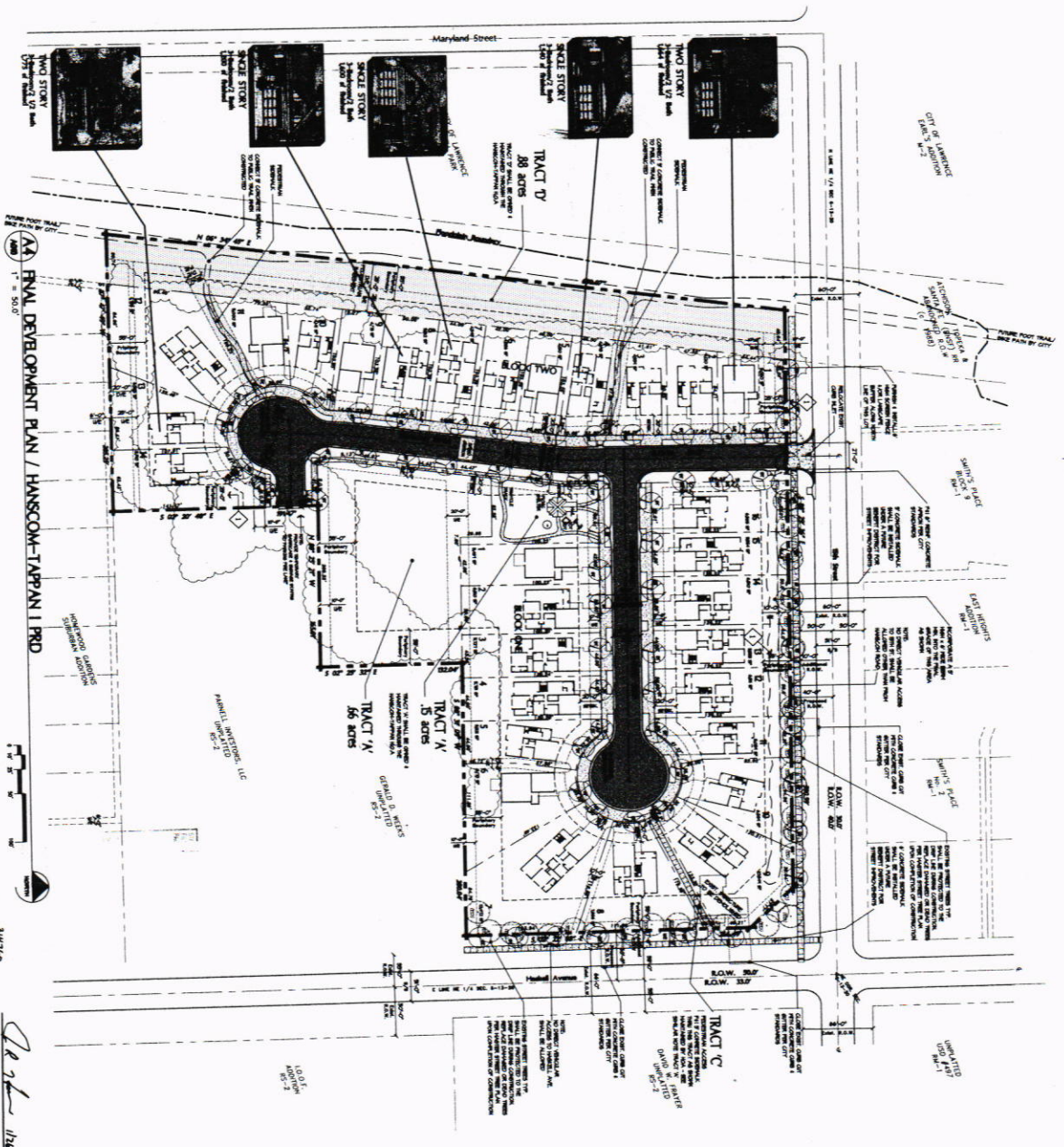


17-841



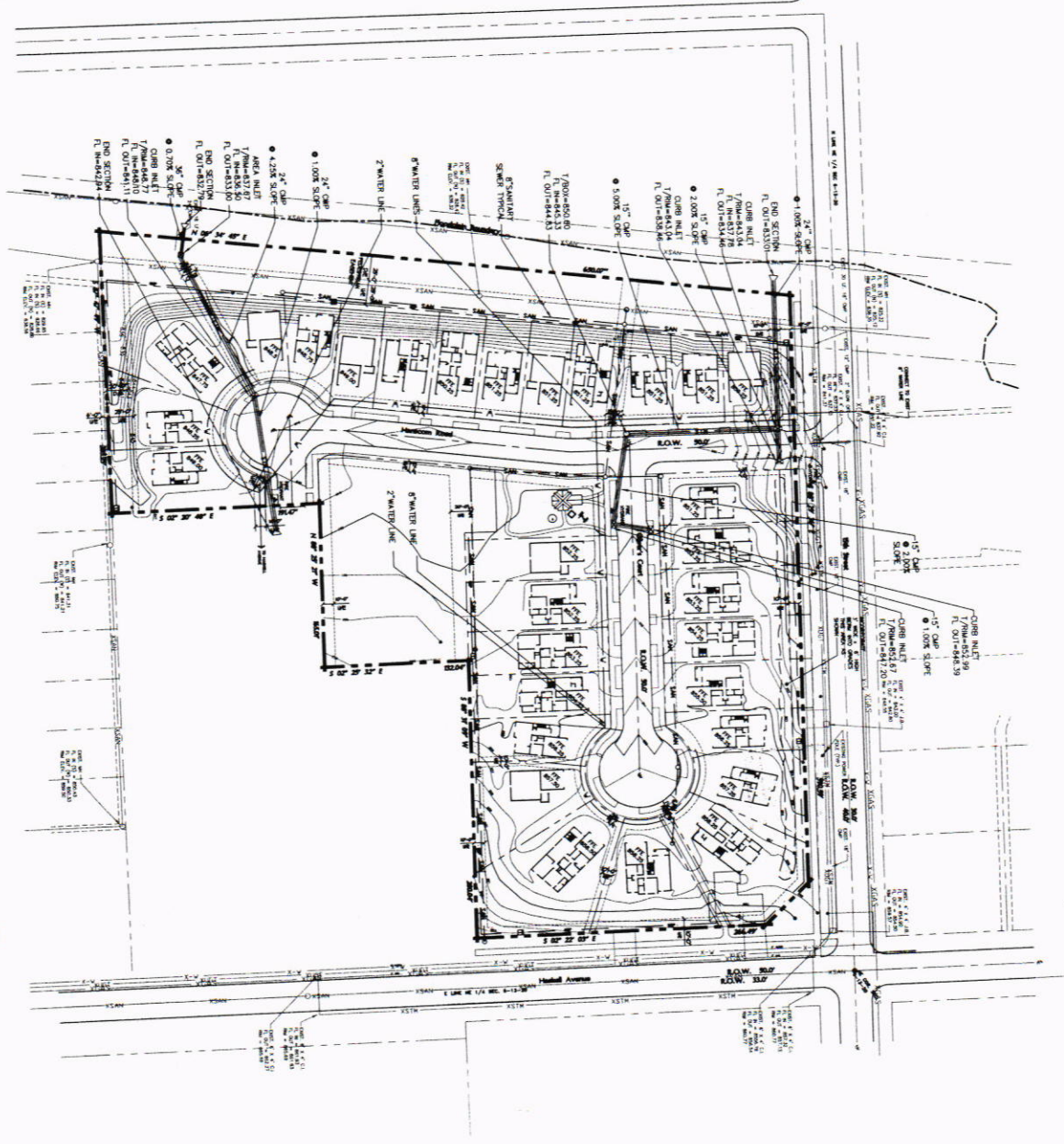
*Dr. M. S. [Signature]*  
 Planning Commission  
 Chairman

*[Signature]*  
 Planning Commission  
 Secretary

<p><b>General Development Standards (GDS-1)</b></p> <p>1. All buildings shall be constructed of masonry, concrete, or steel frame construction.</p> <p>2. All buildings shall be finished with a minimum of 1/2 inch thick brick or concrete block.</p> <p>3. All buildings shall be finished with a minimum of 1/2 inch thick brick or concrete block.</p> <p>4. All buildings shall be finished with a minimum of 1/2 inch thick brick or concrete block.</p>	
<p><b>Site Summary</b></p> <p>Site Area: 100,000 sq. ft.</p> <p>Building Area: 50,000 sq. ft.</p> <p>Parking: 100 spaces</p>	
<p><b>Landmarks</b></p> <p>1. 15th Street</p> <p>2. Haskell Avenue</p>	
<p><b>General Notes</b></p> <p>1. All buildings shall be constructed of masonry, concrete, or steel frame construction.</p> <p>2. All buildings shall be finished with a minimum of 1/2 inch thick brick or concrete block.</p> <p>3. All buildings shall be finished with a minimum of 1/2 inch thick brick or concrete block.</p> <p>4. All buildings shall be finished with a minimum of 1/2 inch thick brick or concrete block.</p>	
<p><b>Project &amp; Date</b></p> <p>PROJECT: HANSCOM-TAPPAN PRD          DRAWN BY: [Name]          CHECKED BY: [Name]          DATE: 05/20/05</p>	
<p><b>Site Layout</b></p> <p>SITE LAYOUT          HANSCOM-TAPPAN PRD</p>	
<p><b>Sheet</b></p> <p>A010          1 of 2 Sheets</p>	
<p><b>HANSCOM-TAPPAN PRD</b>  <b>Final Development Plan</b>          15th Street &amp; Haskell Avenue          Lawrence, Kansas</p>	
<p><b>Belot/Hartruff Associates, LLC</b>          ARCHITECTS &amp; PLANNERS</p> <p>706 W. 9th Street, Suite 305          Lawrence, KS 66044          Tel: 785.843.6670 / Fax: 843.6642</p> <p>801 14th Street, Suite 300          Lawrence, Kansas 66052          Tel: 785.843.2004 / Fax: 875.9319</p>	

C:\ACAD\JOB\\_243684.DWG • 06/07/1999 • 11:30 • 1.46/1.48 •

**FINAL GRADING PLAN & UTILITY LAYOUT/ HANSCOM-TAPPAN I PRD**



https://landmark.douglascountys.ora/andmarkWeb/search/index?theme=blue&section=searchCriteriaI.ea&quickSearchSelection=#

2 of 2

<p>2 of 2 Sheets Sheet <b>A011</b></p>	<p><b>GRADING &amp; UTILITY LAYOUT/ HANSCOM-TAPPAN I PRD</b></p>	<p><b>HANSCOM-TAPPAN PRD</b> Final Development Plan Formerly Parnell Park I PRD 15th Street &amp; Haskell Avenue Lawrence, Kansas</p>	<p><b>Belot/Hartront Associates, LLC</b> ARCHITECTS &amp; PLANNERS 708 W. 9th Street, Suite 205 Lawrence, KS 66044 Tel 785.843.4670 / Fax 843.4642 801 Ninth Street, Suite 300 Lawrence, Kansas 66044 Tel 303.673.9304 / Fax 673.5399</p>
--	--	---	---